

**MISSION STATEMENT:**  
**Equipping people for a growing relationship  
with Jesus Christ to serve all.**

---

**WE WELCOME YOU!**

Thank you for worshiping with us today. We're glad you're here!  
Please fill out the Ritual of Friendship book located in the pew.

**PRAYER CONCERNS**

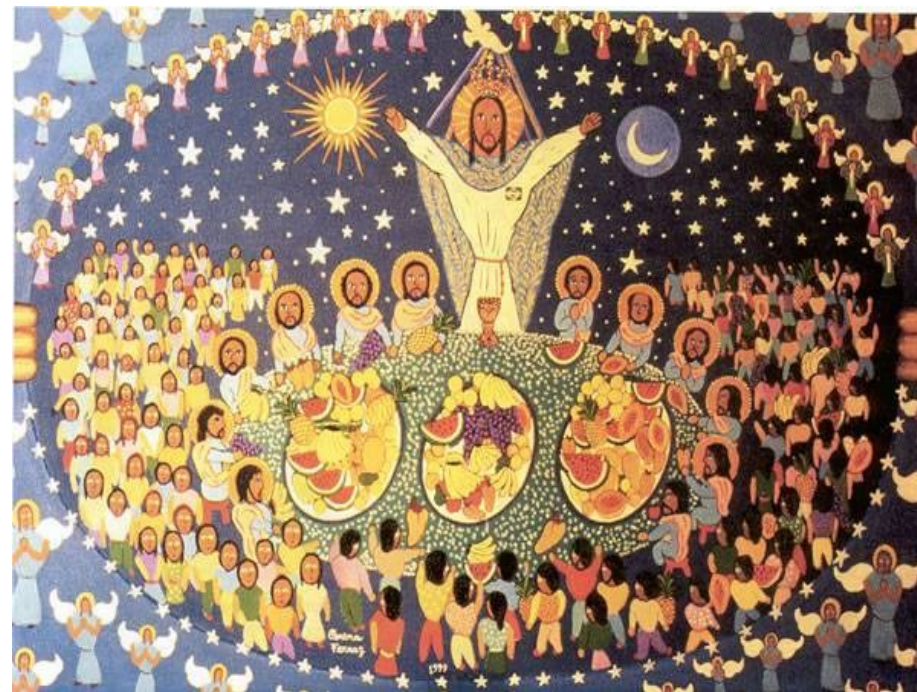
If you have a gratitude you wish to share, a prayer concern or would like to request a pastoral visit, please complete the appropriate card found in the pews and place it in the offering plate.

**CHILD CARE**

At the 8:30am and 10:00am worship services child care is provided in the Nursery (Room 208) for Infants thru Preschoolers, and at 11:00am for Infants through Toddlers. At the 11:00am worship service Pre-Schoolers through Kindergartners are invited to Playful Praise in Room 102 following the Children's Time.

**COFFEE HOUR IN THE FELLOWSHIP HALL**

Please join us in Janet Brown Fellowship Hall following the 8:30am worship service for coffee and snacks. The Young Men's Group will be our hosts today and they look forward to seeing you.



---

Rev. Eun-Hye Choi, Lead Pastor  
Rev. Chris Walters, Associate Pastor  
Rev. Sherry Scates, Minister of Faith Formation

**Sunday Worship Services:**

8:30a Worship with Chancel Choir  
9:45a Sunday School for all ages and Confirmation  
10:00a Communion Service  
11:00a Worship with Worship Band

John De Groot, Director, Chancel Choir  
Jason Hawkins, Director, Worship Band  
Kathleen Hermansen, Organist  
Karyn Holstead, Director, Jr. Choir  
Kelly Markwell, Director, Bellissimo  
Janine Valkema, Director, Jr. Chimes

15114 S Illinois Street, Plainfield, IL 60544  
Phone: 815-436-9651 Fax: 815-436-9764  
Website: plainfieldumc.com

March 22, 2015

8:30AM

## Fifth Sunday of Lent

### 8:30AM Worship

*\*Indicates congregation stands*

*Bold type indicates to read in unison*

#### PRELUDE

*"Ah, Holy Jesus" - Pathel*

#### GREETINGS AND ANNOUNCEMENTS

#### CHORAL INTROIT *"Lord, Who Throughout These Forty Days"*

#### \*CALL TO WORSHIP (Psalm 23: 4)

Even though I walk through the darkest valley,  
**I fear no evil,**  
For you are with me;  
**Your rod and your staff – they comfort me.**

#### \*HYMN OF PRAISE

UMH #170 *"O How I Love Jesus"*

#### \*OPENING PRAYER

**Compassionate and all-merciful God, we thank you that in love you sent Jesus Christ to share our earthly life with its joy and suffering. Give us grace, that in our need we may come to you in humility and receive your blessing with open hearts, that we may once again serve you with joy and thanksgiving. Amen.** (Ruth C. Duck)

#### \*SHARING SIGNS OF PEACE AND OTHER GREETINGS

The Peace of the Lord be with you.  
**And also with you.**

#### CHILDREN'S TIME

MickeySue Traver

TFWS #2233 *"Where Children Belong"*

*This, this is where children belong, welcomed as part of the worshiping throng. Water, God's Word, bread and cup, prayer, and song: This is where children belong.*

#### TESTIMONY

Melissa Vidito

**ANTHEM** *"The Blood Will Never Lose Its Power"* - Andrae Crouch  
arranged by Bradley Knight  
Sherry Scates, Soloist

#### PRAYERS OF THE PEOPLE

Sharing Joys and Concerns  
Pastoral Prayer  
Lord's Prayers (trespasses)

UMH #895

#### OLD TESTAMENT

Isaiah 25:6-9

#### \*HYMN

TFWS #2152 *"Change My Heart, O God"*

#### \*GOSPEL LESSON

Matthew 22:1-14

#### SERMON

*"God's Welcome for the Good and the Bad"*

Rev. Eun-Hye Choi

#### WORSHIP IN TITHES AND OFFERING

Offertory Bellissimo: *"God of Grace and God of Glory"*  
\*Doxology UMH #94  
Prayer of Dedication

#### \*CLOSING HYMN

TFWS #2126 *"All Who Hunger"*

#### \*BENEDICTION

**\*CHORAL BENEDICTION** *"May the Lord Bless You and Keep You"*  
Grier and Everson

#### POSTLUDE

*"Jesus, I Will Ponder Now"* - Walther

Scripture Reader: Melissa Vidito